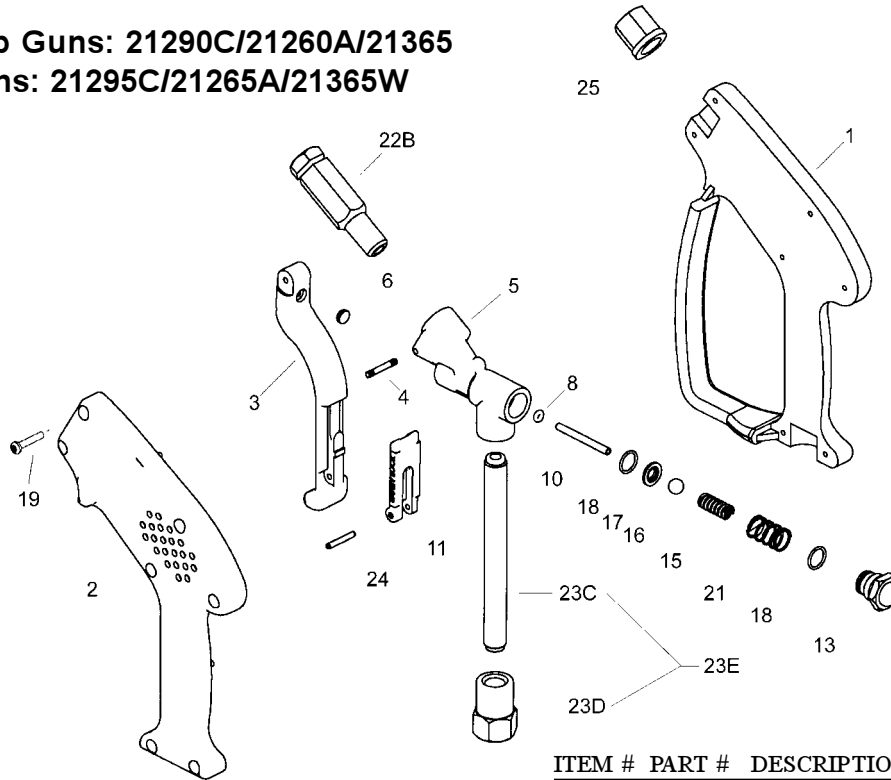


Models

Shut-Off Guns

21290C, 21295C, 21260A, 21265A 21365, 21365W

Non-Weep Guns: 21290C/21260A/21365
Weep Guns: 21295C/21265A/21365W



Note: Guns manufactured prior to 11-92 use cap #21208. When replacing this cap you must replace with cap #21432 and valve body #6411.

OPERATING CONDITIONS

Maximum Flow: 10 GPM
Maximum Pressure: 5000 P.S.I.
Maximum Temperature: 300 °F
Inlet Port: 3/8" FNPT
Outlet Port: 1/4" FNPT

ITEM #	PART #	DESCRIPTION	QUANTITY
1	21271A	Housing, Right Half	1
2	21272A	Housing, Left Half	1
3	21273	Trigger, 21290C, 21260, 21365	1
3	21012	Trigger, 21295C, 21265, 21365	1
4	21214	Pin	1
5	06411	Valve Body	1
*6	21213	Cam, Trigger	1
*8	21210	O-Ring	1
*10	21209	Control Bolt	1
11	21274	Lock, 21290C, 21260, 21365	1
11	21013	Lock, 21295C, 21265, 21365W	1
13	21432	Cap	1
*15	21431	Valve Spring	1
*16	21205	Valve Ball	1
*17	21218	Valve Seat, 21290C, 21260, 21365	1
*17	21237	Valve Seat, 21295C, 21265, 21365W	1
*18	21217	O-ring	2
19	21254	Self Tapping Screw	7
*21	21251	Spring	1
22B	21279	Discharge Tube/Fitting S.S., 21290C, 21295C	1
22B	21282	Discharge Tube/Fitting, Steel 21365	1
23C	21331	Inlet Tube	1
23D	21244	Inlet Fitting	1
23E	21257*	Inlet Tube Assembly	1
24	21236	Lock Pin	1
25	21275	Hex Bushing, 21260, 21265	1

21290C, 21260A, 21365 Kit # 21227 *includes items #6, 8, 10, 15-18, and 21
 21295C, 21265A, 21365W Kit # 21240 *includes items #6, 8, 10, 15-18, and 21

*May order 23C and 23D as an assembly

INSTALLATION & OPERATING INSTRUCTIONS

DISASSEMBLY OF THE 21200 SERIES

- 1) Remove the seven cheese head screws (item #19) that secure the two halves of the housing together. Remove housings (items #1 and #2).
- 2) With a small dowel, remove the cam (#6) through the backside of the trigger.
- 3) Remove the cap (item #13), springs (items #21 and #15), and ball (item #16).
- 4) With a hooked screw driver, pull seat (#17) & o-ring (#18) out. Pull control bolt (#10) out. You may have to pick o-ring (#18) out of the valve body (#5) with a small hooked instrument.
- 5) Grease o-ring (#18) & control bolt (#10) & insert back into valve body (#15). Make sure it slides easily. Put o-ring (#18) on seat (#17) & push into place.
- 6) Assemble in reverse order.

WARNING: DO NOT USE ACID CONCENTRATES THROUGH GUN

WARNING: NEVER SECURE THE SHUT-OFF GUN IN AN OPEN POSITION (TRIGGER PULLED BACK) BY MEANS OTHER THAN THE OPERATOR'S HAND, ETC. BODILY HARM MAY OCCUR IF THE OPERATOR LOSES CONTROL OF THE SHUT-OFF GUN.

CAUTION: ALWAYS ENGAGE TRIGGER LOCKING MECHANISM (ITEM #11) WHEN NOT IN USE.



Giant Industries, Inc.
900 N. Westwood Ave., P.O. Box 3187, Toledo, Ohio 43607
419-531-4600 Fax: 419-531-6836
www.giantpumps.com

© Copyright 2001 Giant Industries, Inc.

4/01 21290C.PM6