

FEATURES

- Designed and engineered exclusively for Landa pressure washers.
- Seven year limited warranty.
- Forged brass manifold with FEA computer enhanced design to increase strength in critical areas.
- Die cast aluminum crackcase with extended piston rod guides for long seal life.
- Die cast aluminum connecting rods with extended length and size.
- Mirror finish ceramic plungers with increased thickness to resist thermal shock and corrosion.
- Industrial duty ball bearings.
- Stainless steel inlet and discharge valve assemblies.
- Forged valve caps with recessed O-rings to withstand leakage at high pressures.
- Dacromet® coated manifold bolts for extra corrosion resistance.
- U-Seal packing assembly for long life and temperature resistance.
- Flanged for direct coupling to an electric motor with a 56C mounting.
- Complete packing seals in the pump head (no water contact with the crankcase).
- New pump head.
- New spacer.
- New plunger rod.

NEW

NEW

NEW

NEW

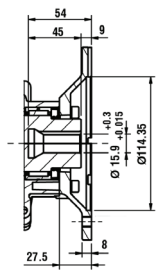
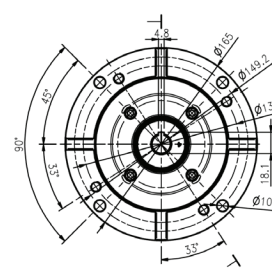
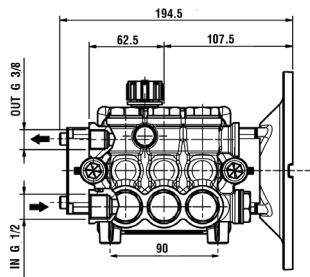
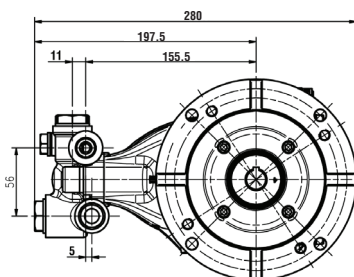


Image is only illustrative

SPECIFICATIONS

PUMP MODEL	LFP2030S	LFP2830S
Part Number	8.929-260.0	8.929-265.0
Maximum Volume (GPM)	2.1	2.8
Max. Discharge Pressure (PSI)	3000	
Maximum Pump Speed	1725	
Maximum Inlet Pressure	125 PSI	
Maximum Inlet Vacuum	Flooded	
Bore	16 mm	
Stroke	7.8 mm	11 mm
Crankcase Oil Capacity	13.5 oz	
Maximum Fluid Temperature	185° F	
Inlet Port Thread	1/2-14 BSPP-F	
Discharge Port Thread	3/8-19 BSPP-F	
Shaft Diameter x Shaft Length	5/8" Hollow	
Weight	17 Lbs	
Dimensions (L x W x H)	10.5 x 8.75 x 5.30 in	

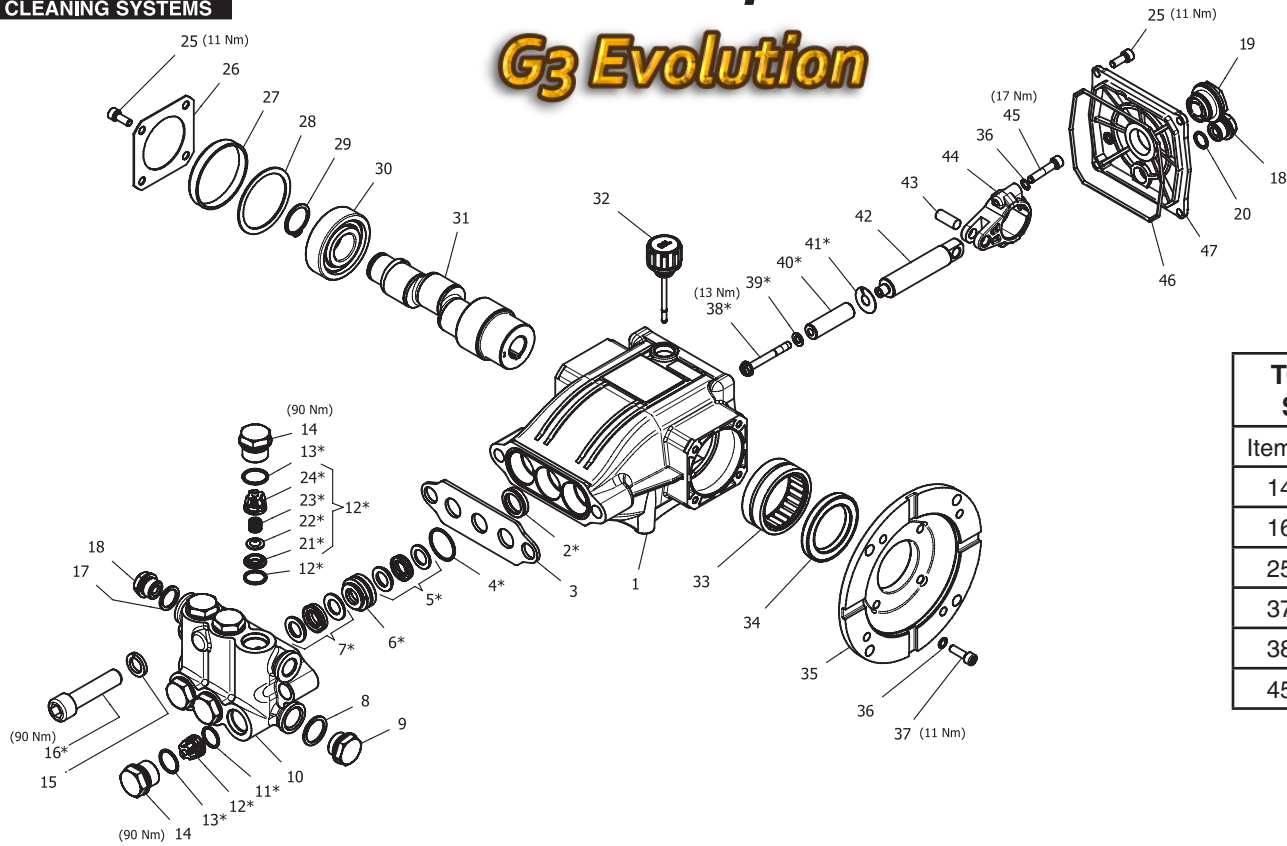
DIMENSIONS



LANDA® LFP Series Pump

CLEANING SYSTEMS

G3 Evolution



TORQUE SPECS	
Item #	Ft.-lbs
14	65
16	65
25	8
37	8
38	10
45	13

PARTS LIST

ITEM	PART NO.	DESCRIPTION	QTY	ITEM	PART NO.	DESCRIPTION	QTY	ITEM	PART NO.	DESCRIPTION	QTY
1	8.754-841.0	Crankcase	1	20	9.803-906.0	O-ring Ø1.78 X 14	1	36	9.803-210.0	Washer	10
2*	9.850-005.0	Plunger Oil Seal	3	21*	See Kits Below	Valve Seat	6	37	8.752-824.0	Screw, 6 mm	4
3	9.853-555.0	Spacer	1	22*	See Kits Below	Valve Plate	6	38*	8.754-855.0	Bolt, Plunger	3
4*	9.850-780.0	O-ring Ø1.78 X 26.7	3	23*	See Kits Below	Valve Spring	6	39*	8.754-092.0	Spacer, Copper	3
5*	See Kits Below	"U" Seal kit	3	24*	See Kits Below	Valve Cage	6	40*	8.754-848.0	Plunger, 16mm (2030S, 2830S)	3
6*	See Kits Below	Pressure Ring Kit	3	25	9.802-939.0	Screw, M6 X 16	8		8.754-849.0	Plunger, 14mm (2030F, 2830F, 3530F)	3
7*	See Kits Below	"U" Seal kit	3	26	8.717-137.0	Bearing Cover	1	41*	9.803-962.0	Spacer, Copper	3
8	9.803-199.0	Washer, Copper G1/2	1	27	9.803-954.0	Bearing Seal	1	42	8.759-032.0	Plunger Rod	3
9	8.929-348.0	Plug, Brass G1/2	1	28	8.754-843.0	Seal Spacer, Crankshaft	1	43	9.803-965.0	Connecting Rod Pin	3
10	8.759-027.0	Manifold 14mm	1	29	9.802-914.0	Snap Ring, 25 mm	1	44	9.803-966.0	Connecting Rod	3
	8.759-028.0	Manifold 16mm	1	30	9.803-955.0	Bearing, Ball	1	45	8.933-020.0	Screw, Connecting Rod	6
11*	8.717-233.0	O-ring Ø1.78 X 15.6	6	31	8.754-835.0	Shaft, 5/8" Hollow 2030F 1		46	8.754-847.0	O-ring Ø2.62 X 111.62	1
12*	See Kits Below	Valve Assembly	6		8.754-836.0	Shaft, 5/8" Hollow 2030S 1		47	8.754-842.0	Cover, Crankcase	1
13*	9.803-948.0	O-ring Ø1.78 X 18.77	6		8.754-837.0	Shaft, 5/8" Hollow 2830F 1					
14	9.803-949.0	Valve Plug	6		8.754-838.0	Shaft, 5/8" Hollow 2830S 1					
15	8.754-850.0	Washer, Lock	2		8.754-839.0	Shaft, 5/8" Hollow 3530F 1					
16*	8.929-349.0	Bolt, Manifold M14X60	2	32	8.754-219.0	Oil Dipstick	1				
17	9.803-198.0	Washer, Copper G3/8	1	33	8.754-840.0	Bearing Needle	1				
18	8.707-262.0	Plug, Brass G3/8	2	34	8.754-826.0	Seal, Crankshaft	1				
19	9.803-202.0	Sight Glass, G3/4	1	35	8.754-844.0	Flange, Motor	1				

* Available in kit (See below)

REPAIR KITS

KIT NUMBERS	8.759-031.0	8.759-015.0	8.758-218.0	8.929-348.0	8.754-862.0	8.754-858.0	8.754-859.0	9.803-937.0
KIT DESCRIPTION	Plunger Seals 14 mm	Plunger Seals 16 mm	Seal Packing 14 mm	Seal Packing 16 mm	Plunger 14 mm	Plunger 16 mm	Complete Valve	Plunger Oil Seals
ITEM NUMBERS INCLUDED	4, 5, 7, 16	4, 5, 7, 16	4, 5, 6, 7, 16	4, 5, 6, 7, 16	38, 39, 40, 41	38, 39, 40, 41	11, 12, 13	2
NUMBER OF CYLINDERS KIT WILL SERVICE	3	3	3	3	1	1	6	3

14 mm Models: 2030F, 2830, 3530F; 16 mm Models: 2030S, 2830S