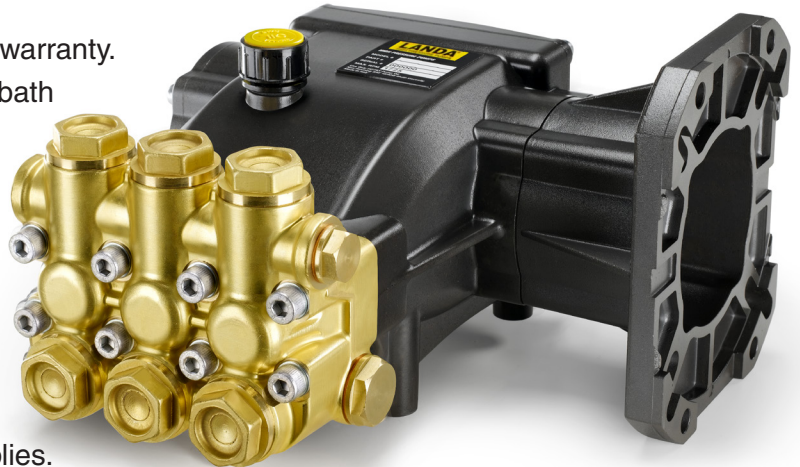


FEATURES

G3 Evolution

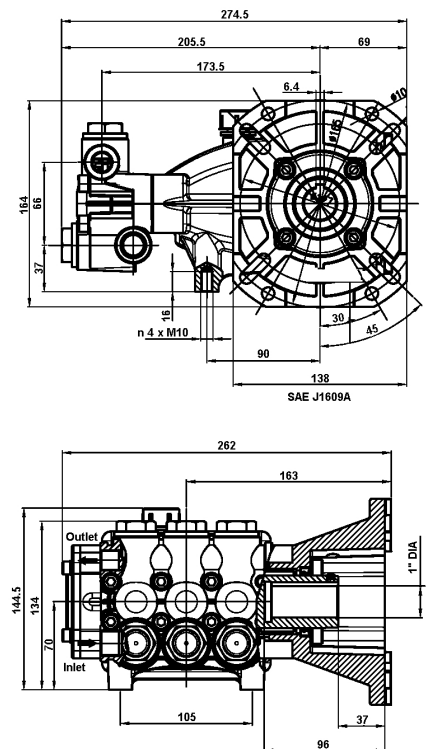
- Designed and engineered for Landa pressure washers.
- Seven year limited warranty.
- Forged brass manifold with an exclusive lifetime warranty.
- Large capacity, die-cast, anodized aluminum oil-bath crankcase with precision rod guide.
- Over-sized connecting rods and crankshaft for maximum life.
- Heavy-duty dual raceway crankcase bearing.
- High load capacity flange needle bearing.
- Solid ceramic plungers with mirror finish and corrosion resistance.
- Parker U-Seals for premium performance.
- Stainless steel inlet and discharge valve assemblies.
- Forged valve caps with recessed O-rings to withstand high pressures.
- Dacromet® coated manifold bolts for superior corrosion resistance.



SPECIFICATIONS

PUMP MODEL	LS3040G.3	LS3540G.3	LS4040G.3	LS5030G.3
Maximum Volume (GPM)	3	3.5	4	5
Max. Discharge Pressure (PSI)	4000	4000	4000	3000
Maximum Pump Speed	3400	3400	3400	3400
Maximum Inlet Pressure	125 psi			
Maximum Inlet Vacuum	Flooded			
Bore	15 mm	15 mm	15 mm	15 mm
Stroke	7.7 mm	9 mm	10.3 mm	12 mm
Crankcase Oil Capacity	23.6 oz. SAE 20/40W			
Maximum Fluid Temperature	185°F			
Inlet Port Thread	1/2-14 BSPP-F			
Discharge Port Thread	3/8-19 BSPP-F			
Shaft Diameter	1" Hollow			
Weight	23 lbs.			
Dimensions	11 x 10.2 x 5.7 in.			

DIMENSIONS

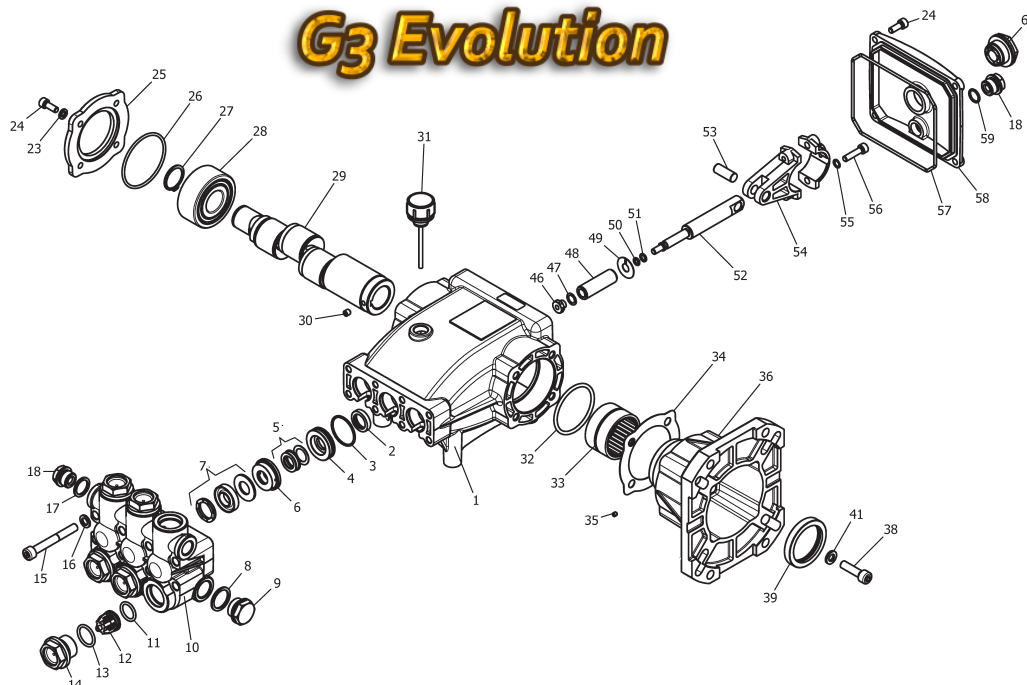


LANDA® LS.3 Series Pump

8.751-175.0 LS3040G.3
 8.751-176.0 LS3540G.3
 8.751-177.0 LS4040G.3
 8.751-178.0 LS5030G.3

G3 Evolution

TORQUE SPECS	
Item #	Ft.-lbs
14	75
15	30
24	7.6
38	10
46	7
56	13



PARTS LIST

ITEM	PART NO.	DESCRIPTION	QTY	ITEM	PART NO.	DESCRIPTION	QTY	ITEM	PART NO.	DESCRIPTION	QTY
1	8.751-217.0	Crankcase	1	23	9.803-210.0	Washer, M6 x 16	4	47*	See Kit Below	Washer, Copper, 9.2 x 13.5	3
2*	See Kit Below	Plunger Oil Seal	3	24	9.802-939.0	Hexagonal Screw	9	48*	See Kit Below	Plunger, 15mm	3
3*	See Kit Below	O-Ring Ø1.78 x 31.47	3	25	9.803-184.0	Closed Bearing Housing	1	49*	See Kit Below	Copper Spacer	3
4*	See Kit Below	Pressure Ring	3	26	8.717-225.0	O-Ring Ø 2.62 x 61.6	1	50*	See Kit Below	O-Ring Ø1.78x5.28	3
5*	See Kit Below	U-Seal, 15mm	3	27	9.802-914.0	Snap Ring	1	51*	See Kit Below	Teflon Ring	3
6*	See Kit Below	Intermed. Ring 15mm	3	28	9.803-168.0	Double Row Ball Bearing	1	52	8.751-225.0	Plunger Rod	3
7*	See Kit Below	U-Seal, 15mm	3	29	9.803-150.0	Crankshaft (3040G.3)	1	53	8.751-228.0	Connecting Rod Pin	3
8	9.803-199.0	Copper Washer 1/2"	1		9.803-151.0	Crankshaft (3540G.3)	1	54	9.803-158.0	Connecting Rod	3
9	9.802-926.0	Brass Plug, 1/2"	1		9.803-152.0	Crankshaft (4040G.3)	1	55	9.803-218.0	Spring Washer	6
10	8.751-218.0	Manifold Housing	1		9.803-153.0	Crankshaft (5030G.3)	1	56	9.803-238.0	Connecting Rod Screw	6
11*	9.803-191.0	O-Ring Ø2.62 x 17.13	6	30	9.802-945.0	Set Screw	1	57	8.933-016.0	O-Ring 2.62 x 126.67	1
12*	See Kit Below	Valve Assembly	6	31	9.802-921.0	Oil Dip Stick	1	58	8.751-229.0	Crankcase Cover	1
13*	9.803-193.0	O-Ring Ø2.62 x 20.29	6	32	9.804-581.0	O-Ring Ø 3.53 x 55.56	1	59	9.803-197.0	O-Ring, Ø 1.78 x 14	1
14	9.802-928.0	Valve Plug	6	33	9.803-161.0	Needle Roller Bearing	1	60	9.803-202.0	Sight Glass, G3/4	1
15	9.802-938.0	Manifold Stud Bolt	8	34	8.751-230.0	Gasket	1	* Part available in kit (See below)			
16	9.802-884.0	Washer	8	35	8.717-544.0	Screw, Set	1				
17	9.803-198.0	Copper Washer 3/8"	1	36	9.803-183.0	Engine Flange	1				
18	9.802-925.0	Brass Plug 3/8"	2	38	9.803-240.0	Flange Screw	4				
				39	9.803-142.0	Crankshaft Seal	1				
				41	9.803-221.0	Spring Washer	4				
				46*	See Kit Below	Plunger Nut, M6	3				

REPAIR KITS

REPAIR KIT NUMBER	8.725-358.0	8.725-359.0	8.933-023.0	9.802-603.0	9.802-609.0
KIT DESCRIPTION	Plunger U-Seal 15mm	Complete U-Seal Packing 15mm	Plunger 15mm	Complete Valve	Plunger Oil Seals
ITEM NUMBERS INCLUDED	3, 5, 7	3, 4, 5, 6, 7	46, 47, 48, 49, 50, 51	11, 12, 13	2
NUMBER OF CYLINDERS KIT WILL SERVICE	3	1	1	6	3